

WOMEN IN TRANSPORT SUMMIT

ROAD ACCIDENT FUND



transport

Department:
Transport
REPUBLIC OF SOUTH AFRICA

Contents

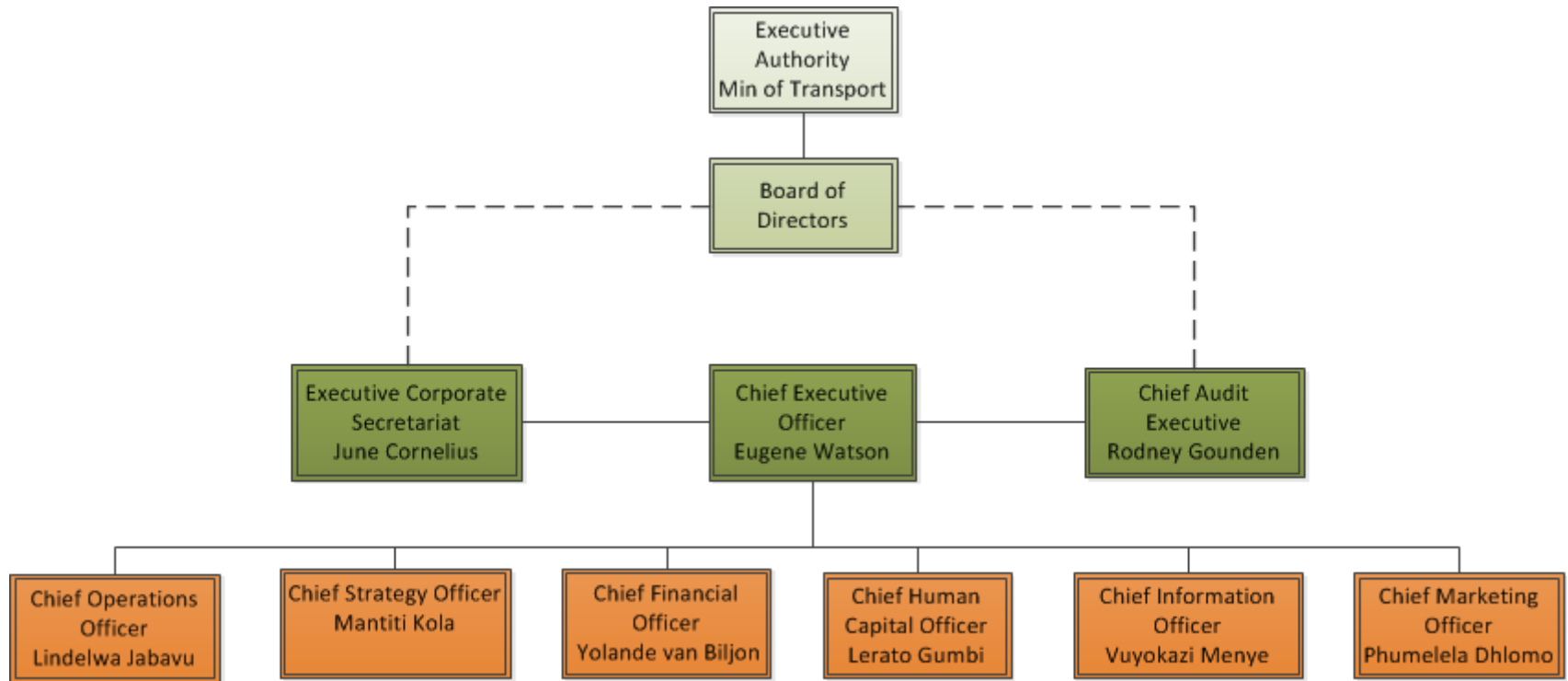
- BBBEE Update
- Business / Entrepreneurial opportunities
- Commercial Project set aside
- Career and skills development
- Challenges
- Recommendations



transport

Department:
Transport
REPUBLIC OF SOUTH AFRICA

Road Accident Fund Structure

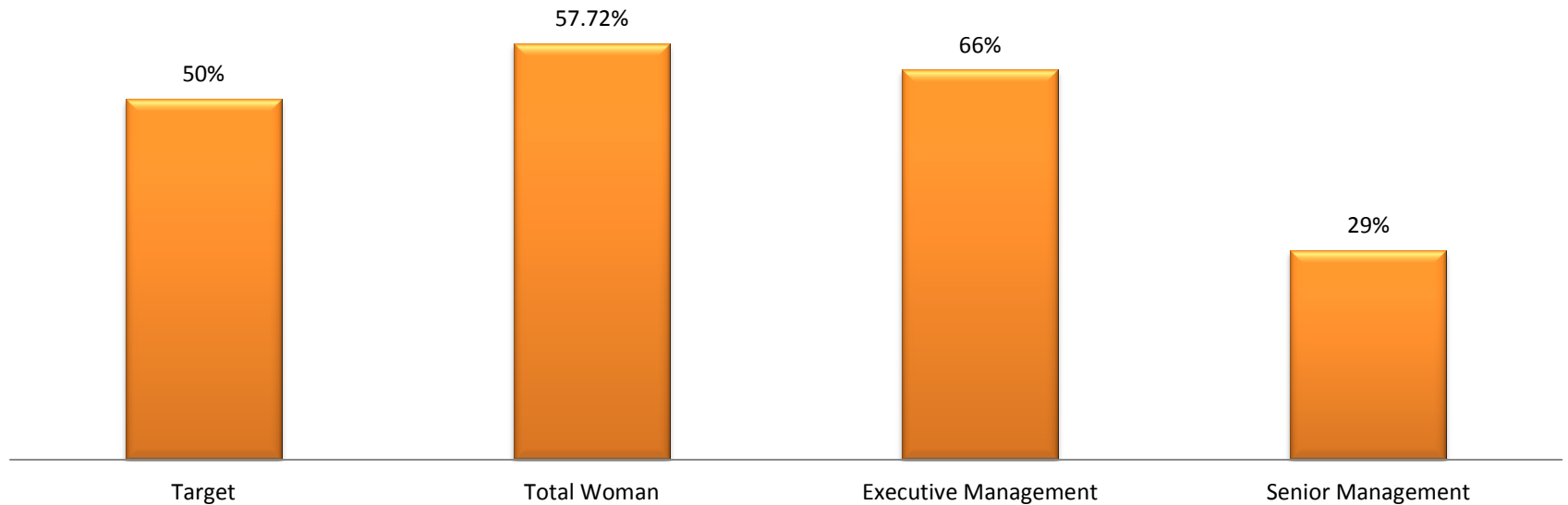


transport

Department:
Transport
REPUBLIC OF SOUTH AFRICA

Current Employment

Current Women Employment Statistics in The Road Accident Fund



transport

Department:
Transport
REPUBLIC OF SOUTH AFRICA

Business / Entrepreneurial Opportunities Current

Preferential Procurement	FY%	2014/15 FY	Q1%	Q1 BEE Spend
Procurement from B-BBEE Compliant Enterprises as defined by the BBEE Recognition levels as % of Total Procurement spend?	113%	1 809 898 856	111%	420,119,520
Procurement from B-BBEE Complaint QSE's & EME's as defined by the B-BBEE Recognition Levels as a % of Total Procurement spend?	61%	1 104 038 302	63%	264,675,297
Procurement from 50% Black Owned as a % of Total Procurement spend?	55%	995 444 370	61%	R256,272,907
Procurement from 30% Black Women Owned Enterprises as a % of Total Procurement spend?	24%	434 375 725	27%	R113,432,270



transport

Department:
Transport
REPUBLIC OF SOUTH AFRICA

Career / Skills development

Development Programmes aimed at developing women within Road Accident Fund:

Gender	Training	Bursaries	Internships	Take a girl child to school
Women	1538	143	16	10



transport

Department:
Transport
REPUBLIC OF SOUTH AFRICA

Career / Skills Development

- EE plan in place
- Skills plan in place
- Gender Mainstreaming Policy has been approved in 2014
- Women’s Forum (national and regional) has been established to be an oversight body on issues affecting Women in RAF
- EE Committee is in place to report on EE Targets relating to Women continuously
- Employee Wellness Programmes designed to focus on Work-Life Balance Issues for Women i.e. Stress Management, Sports Codes, Relationship Management and Family Support Programs
- Programmes:
 - Internship Programme
 - Bursary Programme
 - Voluntary Programme
 - Youth Development
 - Take a girl child to work
 - Women Development Programme



transport

Department:
Transport
REPUBLIC OF SOUTH AFRICA

Challenges and Recommendations

- Future work
 - Road safety work, and BBBEE and Enterprise Development Policies
 - Focus on youth, women and veterans
 - Incorporation of designated groups into future procurement
- CSR policy the focus is on projects that seek to address imbalances through



transport

Department:
Transport
REPUBLIC OF SOUTH AFRICA

Thank you



transport

Department:
Transport
REPUBLIC OF SOUTH AFRICA