



**Statistics
South Africa**

Preferred supplier of quality statistics

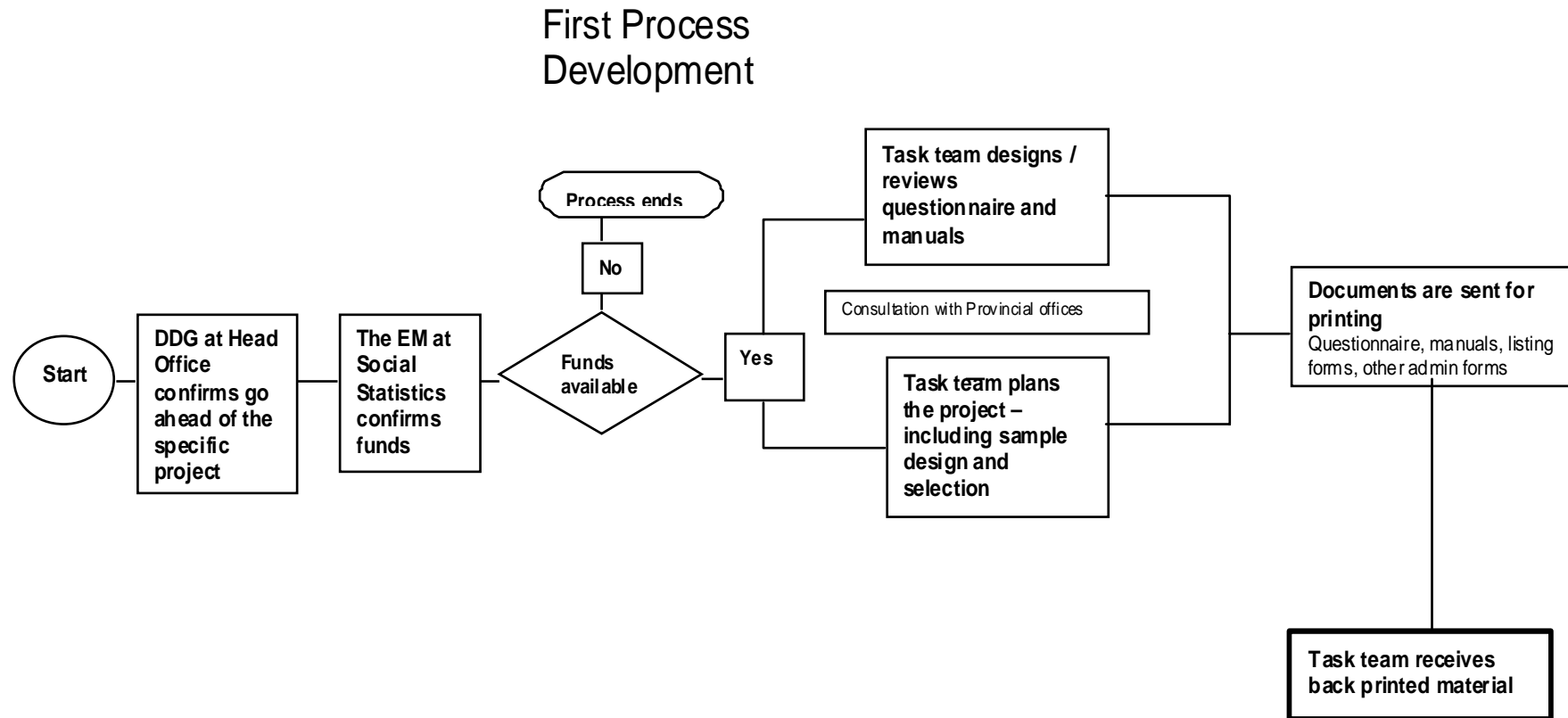


PRESENTATION INFORMATION

DIVISION:	STATISTICS SOUTH AFRICA, SOCIAL STATISTICS
PROJECT:	NATIONAL HOUSEHOLD TRAVEL SURVEY
PRESENTER:	DION PIETERSEN, STATS SA
STATUS:	FINAL
TITLE:	PHASES OF CONDUCTING A NATIONAL TRAVEL SURVEY

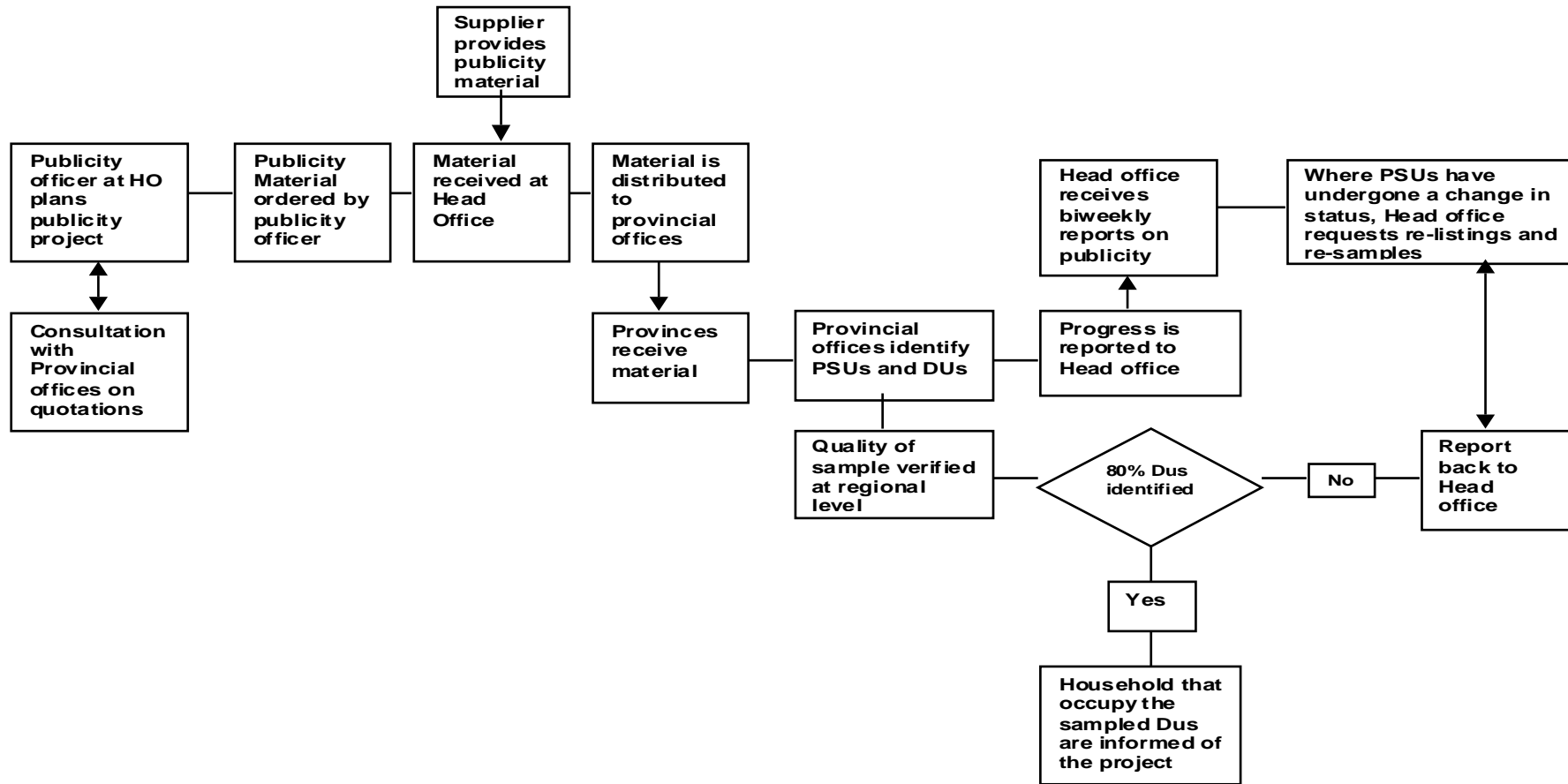


Flow Chart for Household Survey Projects



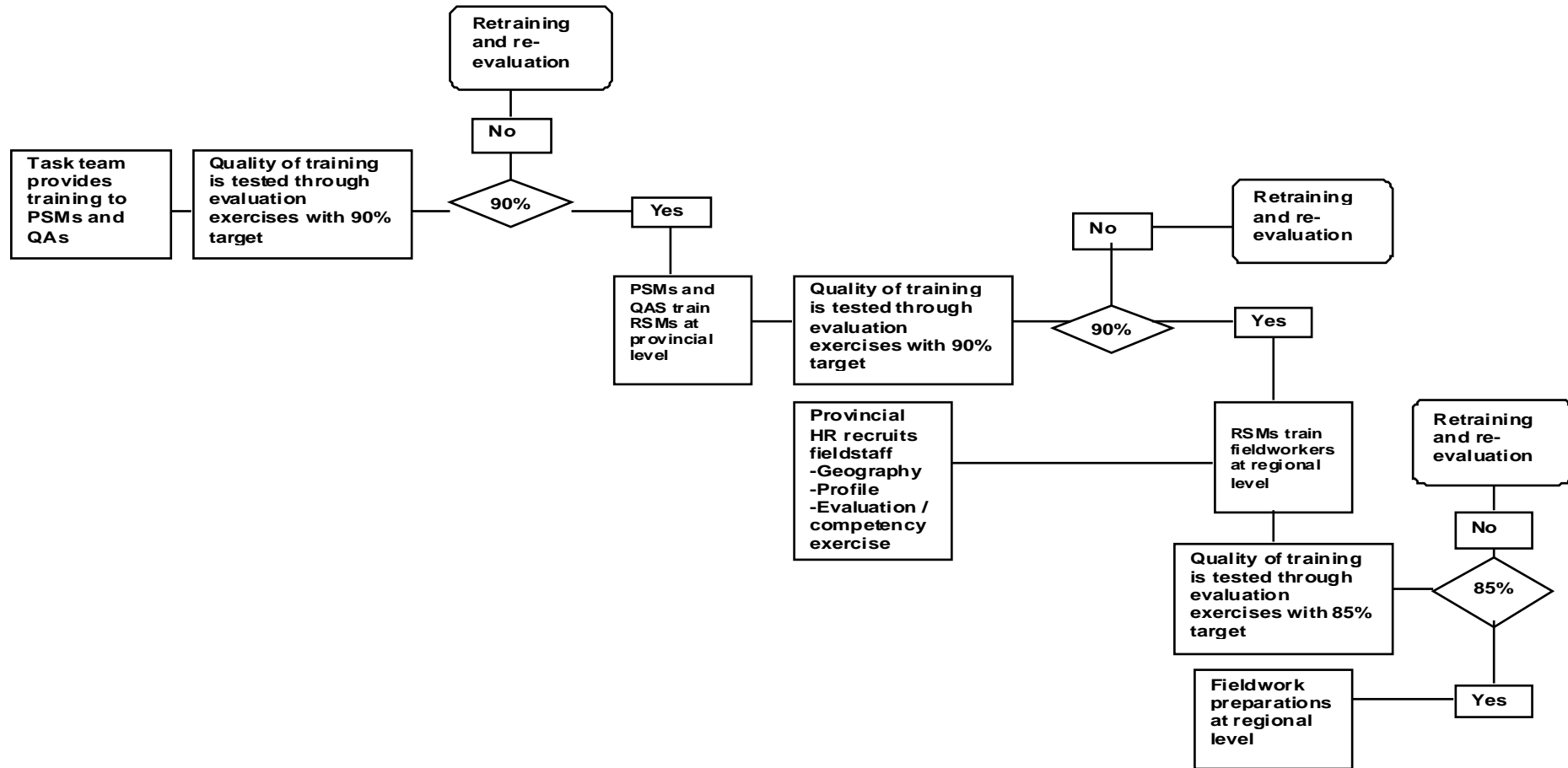


Second Process Publicity



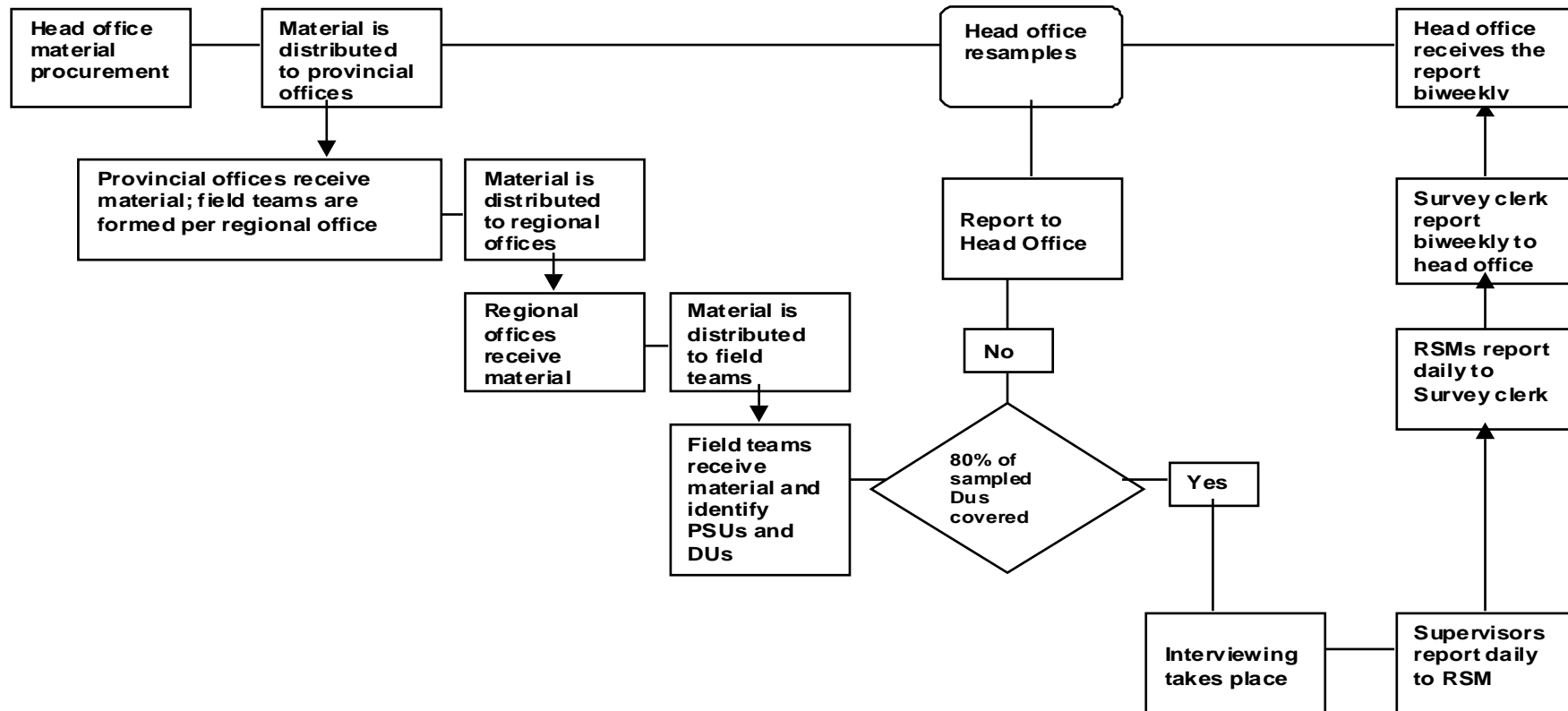


Third Process Training



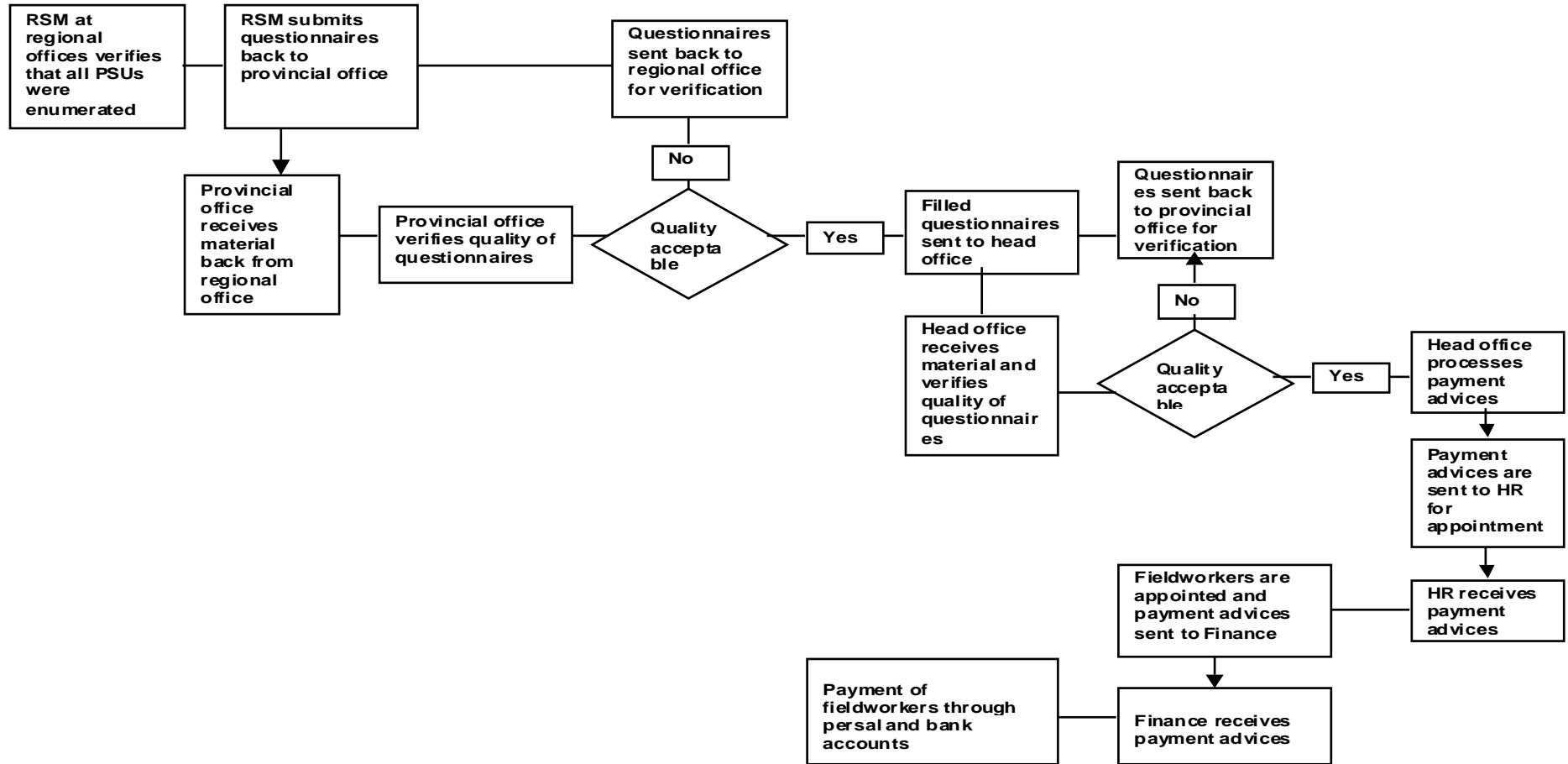


Fourth Process Field Operations



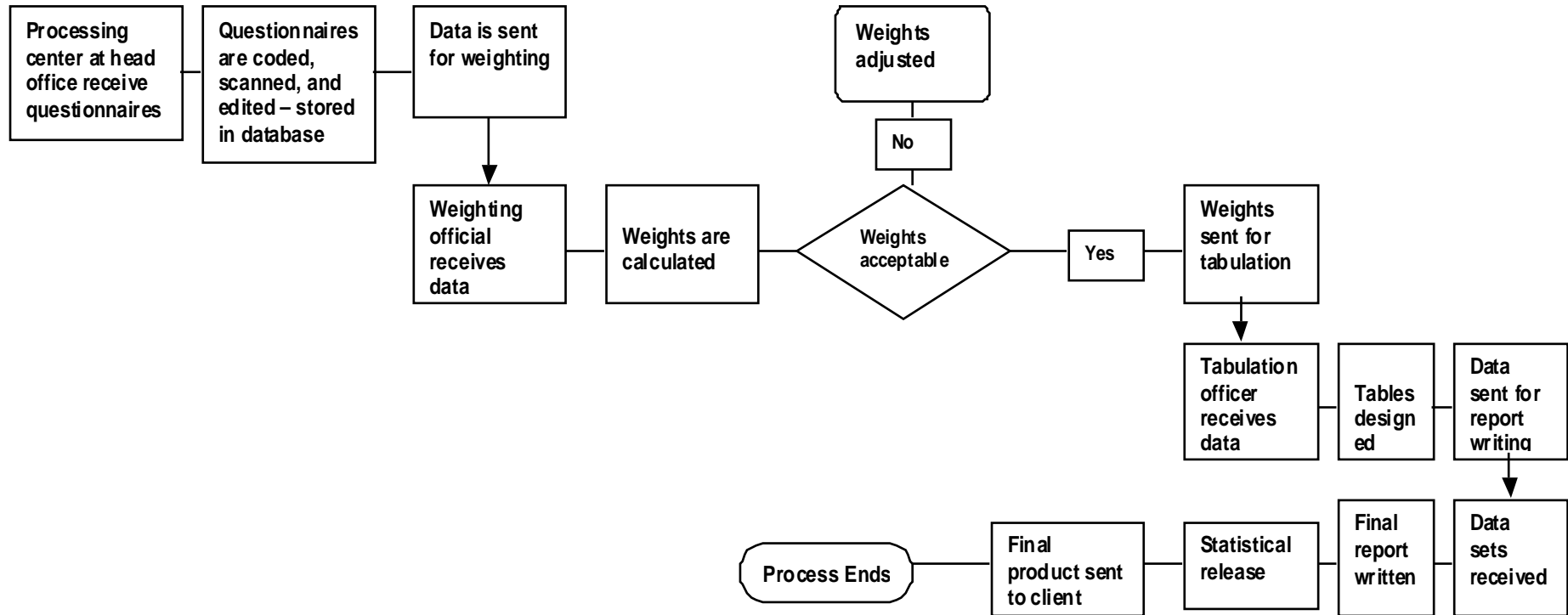


Fifth Process Quality Assurance





Sixth Process Processing



PLANNING OF THE NATIONAL HOUSEHOLD TRAVEL SURVEY

- Design of the questionnaire
- Testing and observational studies
- Sampling
- Field operations
- Processing
- Challenges
- Comments and suggestions

PLANNING OF THE NATIONAL HOUSEHOLD TRAVEL SURVEY DESIGN OF THE QUESTIONNAIRE

Stakeholders consulted:

- National Department of Transport
- TRC Africa Consortium
- Statistics South Africa
- External users – National Treasury
- International consultants – Peter Jones
- Advisory Committee

STRUCTURE OF THE QUESTIONNAIRE

- **COVER – COVERING INFO ON PSU AND SAMPLED DWELLING UNITS**
- **FLAP – STRUCTURE OF THE SAMPLED HOUSEHOLD**

SECTIONS ON:

- DEMOGRAPHIC INFORMATION – AGE , GENDER, RACE
- LEVELS OF EDUCATION
- ACCESS TO FACILITIES
- EMPLOYMENT AND UNEMPLOYMENT
- MODES OF TRANSPORT
- SCREENING QUESTIONS FOR WORKERS
- INDIVIDUAL TRANSPORT QUESTIONS FOR WORKERS

PLANNING OF THE NATIONAL HOUSEHOLD TRAVEL SURVEY TESTING AND OBSERVATIONAL STUDIES

- Intensive Behind the Glass Testing of the questionnaire
12 sessions
- Pilot Survey 1
Gauteng 2003
- Pilot Survey 2
Mpumalanga 2003

PLANNING OF THE NATIONAL HOUSEHOLD TRAVEL SURVEY SAMPLING FOR THE NTS

Step 1

- Overlap the 342 Travel Analysis Zone (TAZ) boundaries with the Census 2001 EA frame

Step 2

Determine the number of EAs to be allocated to each of the TAZ's. Need to use the number of dwelling units in the EAs as a measure of size. The power allocation method was used to determine the number of PSUs to be allocated per TAZ.

Step 3:

Creation of PSUs.

The PSU number consists of 12 digits, this was done by Geography. The first 8 digits represent the EA number and the last 4 digits represent the number of the PSU.

For example:

124700120001 = Western Cape, PSU number 01

PLANNING OF THE NATIONAL HOUSEHOLD TRAVEL SURVEY SAMPLING FOR THE NTS, continued

Step 4:

Pooling EAs – Additional EAs were pooled to form PSUs if the selection criterion which a minimum of 80 dwelling units in an EA, where EA type and Area type must be the same as the original EA. If the original EA drawn was found to have too few dwelling units then the modified method of Kish's pooling of EAs was to be used.

Step 5:

Determining the methodology for selecting dwelling units in the selected PSU.

Once the 09 books had been copied, these were verified in the field during publicity PPS systematic sampling of EAs was used in all cases and equal probability systematic sampling was used to select the dwelling units that would be enumerated in each drawn EA. This allowed for approximate self-weighting of the selected dwelling units within each of the TAZ's.

Step 6:

One person (aged 15 years and older) in each household at each of the selected dwellings was selected for enumeration in Section 7 (attitudes to transport services) in the questionnaire. Kish's grid for selection of individuals in the household aged 15 years and older was used to determine who will be required to complete the attitudes to transport services.